

# MERGE TITLES MANUAL



[Help with web services confusing Captions and Titles](#)

<b>Introduction .....</b>	<b>1</b>
Requirements .....	1
Contact and Support.....	1
Legal Stuff.....	1
<b>What's Included.....</b>	<b>2</b>
New Filter.....	2
New Commands .....	2
<b>Installation.....</b>	<b>3</b>
Windows .....	3
<i>Automatic Installation.....</i>	<i>3</i>
<i>Manual Installation.....</i>	<i>3</i>
OSX (Mac).....	3
Setting up Lightroom .....	4
<i>Enter Your Licence Key.....</i>	<i>4</i>
Configuration .....	5
<b>Using the Plugin .....</b>	<b>6</b>
As a Menu Item.....	6
As a Filter.....	7

## **INTRODUCTION**

This is a simple tool which will help you while exporting photos to web services or other places which treat the “Caption” and “Title” fields as interchangeable.

I have found that different places or services refer to one or the other of these fields, but both of them are in common use. This means that you need to take care to always remember to set the right one before you upload your photos.

This plugin copies one to the other as you decide, and can do this automatically for any export operation so that you never need to remember to do it again.

## **REQUIREMENTS**

- Lightroom 3 or newer, including CC versions.
- Mac or PC.

## **CONTACT AND SUPPORT**

You can get support or ask questions from the website:

<http://www.lightroom-plugins.com/contact.php>

## **LEGAL STUFF**

This plug-in is not specifically endorsed by Adobe Inc.®.

## **WHAT'S INCLUDED**

### **NEW FILTER**

The plugin can be used in two different ways; the first is as an Export filter called “Merge Titles”. Please see “Using the Plugin” for information on how to set this up.

### **NEW COMMANDS**

An extra command has been added to the “File” menu in Lightroom. This can be called at any time for any selected images.

## INSTALLATION

### WINDOWS

#### AUTOMATIC INSTALLATION

The easiest way to install on Windows is to use the MSI installer. Simply double-click and run through the prompts that appear.

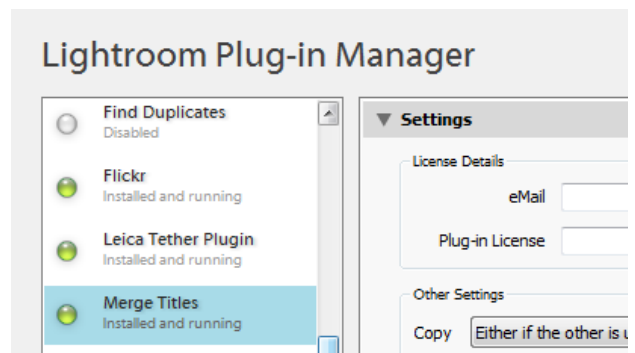
#### MANUAL INSTALLATION

If you prefer to install manually, download the ZIP file instead of the MSI. When it has downloaded, follow the instructions below for installing on the Mac; the steps are identical on Windows.

### OSX (MAC)

1. Download the ZIP and extract it to your desktop. You should see a folder called “MergeTitle” (Mac) or “MergeTitle.lrplugin” (Windows), containing the plug-in.
2. Move this folder anywhere you like.
3. Open Lightroom’s Plugin Manager from the File menu, and click the “Add” button at the bottom of the list.
4. Use the file dialog that appears to select the plugin (ending in **.lrplugin**).

To check that the plug-in has been loaded, go to “File→Plug-in Manager...” and check that a plug-in called “Merge Titles” is shown as “Installed and running”.



## SETTING UP LIGHTROOM

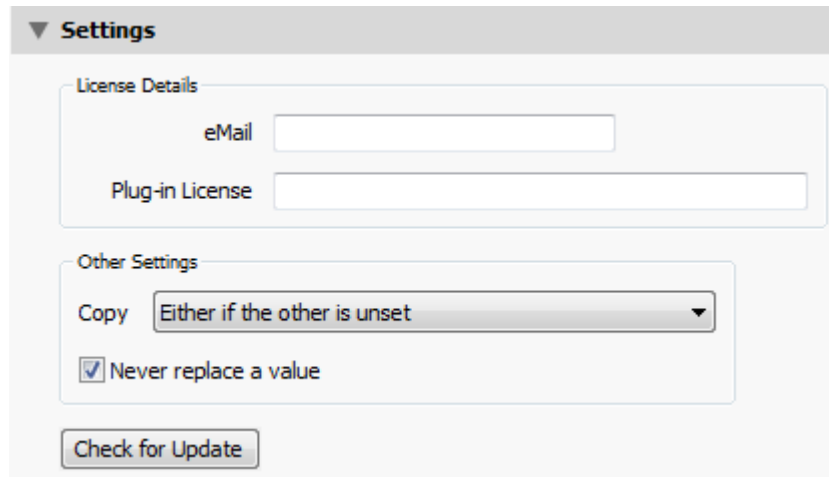
### ENTER YOUR LICENCE KEY

If you have bought the plug-in, you should receive a licence key in an email. Without this, the plug-in will process only three images at a time. To enter the licence key, simply copy and paste it from the email to the box in the Connection Settings dialog that is at the top of the Plugin Manager.

If you lose your license key, you can retrieve it at any time from the Support Center at <http://www.lightroom-plugins.com/support.php> . You will have had an account created automatically; if you have never used it before, you can use the “Forgot Password” button to receive an email containing the account password. The account name will be the email address that you used to buy the license.

## CONFIGURATION

Configuration is very simple. It is done using the Plugin Manager; select the “Merge Titles” plugin from the list on the left of the dialog. The right-hand side will then look like this:



The screenshot shows the 'Settings' dialog for the Merge Titles plugin. It is divided into two sections: 'License Details' and 'Other Settings'. The 'License Details' section contains two text input fields: 'eMail' and 'Plug-in License'. The 'Other Settings' section contains a 'Copy' dropdown menu with the option 'Either if the other is unset' selected, and a checked checkbox labeled 'Never replace a value'. At the bottom of the dialog is a 'Check for Update' button.

You can choose to copy “Title” to “Caption”, “Caption” to “Title” or to copy either one to the other, if the other is not set. Which option is best for you will depend on whether you normally enter your captions into the “Caption” or “Title” fields.

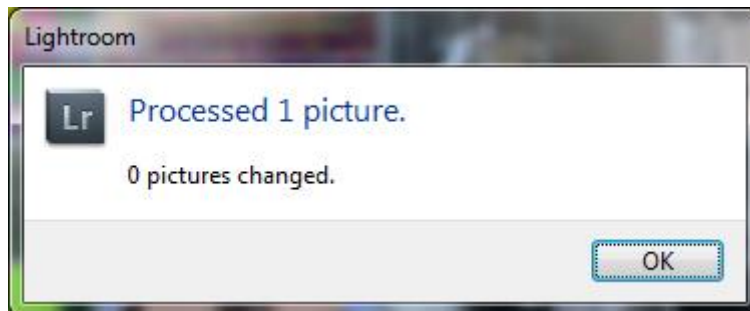
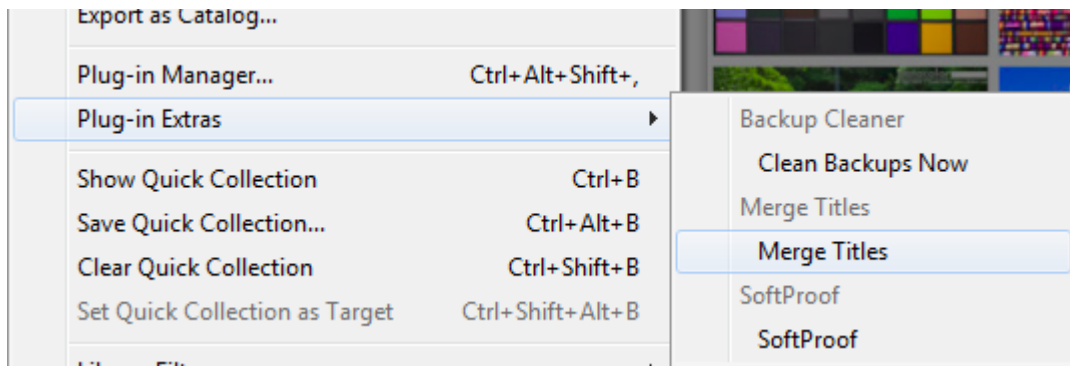
You also have the option to never replace a value in one of the fields, if it is set. Normally this should be set to “off”, so that any changes will get copied correctly every time you use the plugin. However, depending on your particular workflow, this may be useful.

## USING THE PLUGIN

This plugin offers two different ways in which it can be used. Both of these methods perform exactly the same action, which is to copy the contents of the “Caption” field to the “Title” field, or vice-versa, whichever you have configured it to do.

### AS A MENU ITEM

To synchronise title and captions for one photo, or for a set of photos, simple select the photos you want to affect and then use the “Merge Titles” menu item on the File menu:



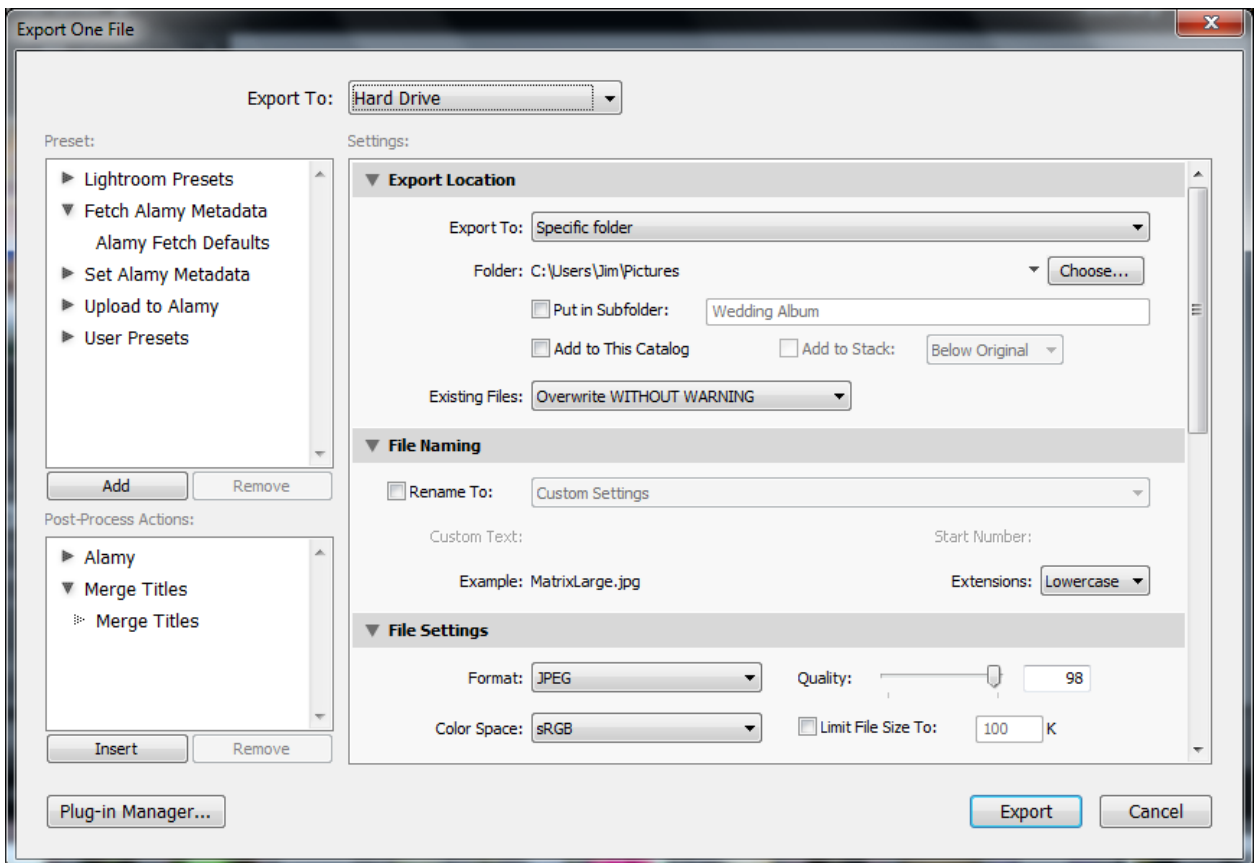
You should get a simple confirmation of the number of photos it has processed:

These numbers may be different, as in the picture above, if the captions are already synchronised in some of your photos. It will only make changes to those photos which need them.



## AS A FILTER

The easiest way to use the plugin is to set it as a filter in the export dialog. In the following examples I will use the “Hard Drive” export filter, but you are more likely to use this when exporting for specific web services. The process is the same for any exporter.

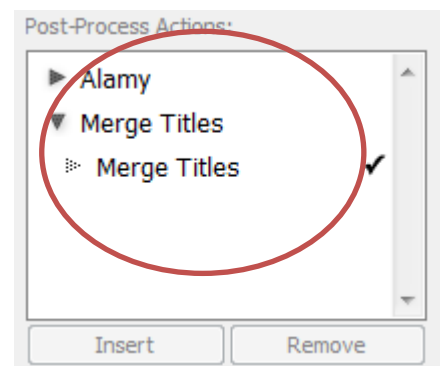


When you first open the “Export...” dialog, there is a list of available filters on the left-hand side:

These filters add features which are applied to every photo that is exported with the filter selected. In the screenshot above, the filter is not selected; to select it, click the “Insert” button or double-click the “Merge Titles” filter. It will then appear with a check-mark to the right:

Once this is done, you will see an additional section in the main Export window with settings for this filter. These settings mirror the ones described above in the Plugin Manager.

Once you have checked that the settings are appropriate, you can go ahead and use the exporter as you would normally. For each photo that is exported, the Title and Caption fields will be copied according to the settings, completely automatically.



When the filter is used as part of an Export dialog, you can save “presets” which remember individual sets of settings. Normally Lightroom will remember the last combination of settings that you used automatically, but by using a preset you can store different versions. For example, you may have one preset for exporting high-quality JPEGs with full metadata for one purpose, and another preset for exporting low-quality, reduced-size JPEGs intended for another purpose. Lightroom will also maintain the settings for any filters that are attached when you create the preset.

Please see the online documentation for Lightroom for more information on export presets.